

POMPA DE MOTORINA

DIESEL OIL PUMP - PM



Descriere si utilizare

Description and use

Pompele de motorina sunt pompe volumice, prevazute cu regulator de debit.
Sunt utilizate la echiparea arzatoarelor si in constructia electropompelor de combustibil ce folosesc drept combustibil motorina.

The diesel oil pumps are volumetric pumps, equipped with flow regulator.
Are used for equipping the burners and in the construction of the fuel electropumps which work with diesel oil.

Codificare

Codification

PM	Marimea Size	Debitul - Flow l/h	Presiunea- Pression bar	Sens rotatie Rotation direction	Turatie - Speed rot / min - rev / min	Tip retur Return type
	1	5 - 50 *	7 sau /or 20 *	S - stanga /left D - dreapta/right	1750 / 3500 / 2800	- Intern / Internal
	2	35 - 110 *				RE Extern / External
	3	75 - 200 *				

Nota : * valorile obtinute sunt in functie de turatia de lucru (vezi tabel).
Note : * the values are function of work rotation (tabel).

Exemplu

Example

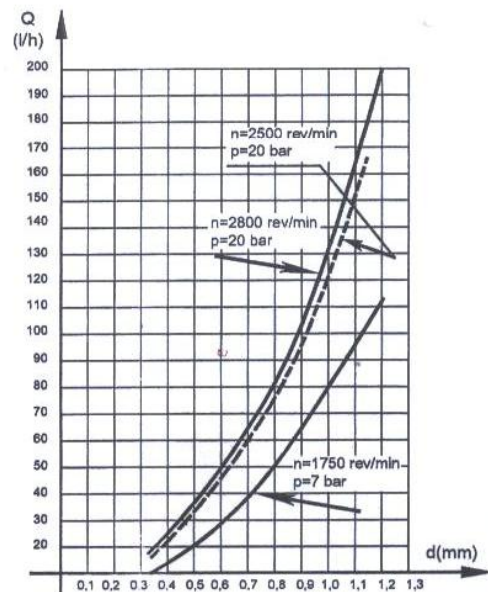
PM - 1 - 030 - 20 - D - 2800

Curba Debit Reglat - Diametrul Duzel

Ajusted Flow - Nozzle Diameter Curve

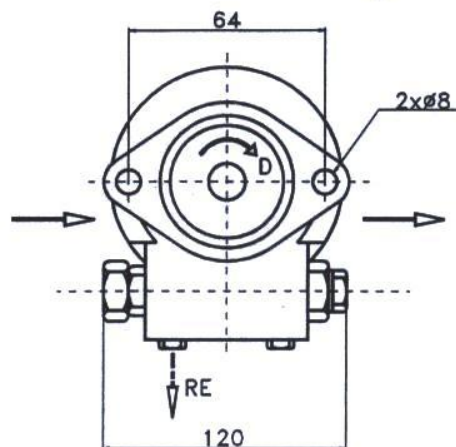
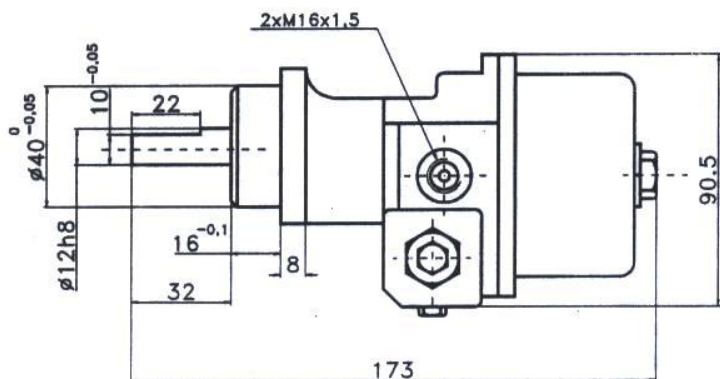
Alegerea reglajului debitului pompei se va face in functie de diametrul duzel arzatorului, consultand diagrama.

The ajustement of the pump flow will be realised function of the nozzle diameter of the burner, consulting the diagram

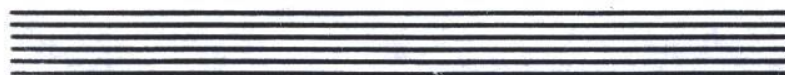


POMPA DE MOTORINA PM - DIESEL OIL PUMP

CARACTERISTICI TEHNICE - TECHNICAL CHARACTERISTICS



Cod - Code	Interval reglare debit Flow Interval l/h	Presiune lucru Pressure bar	Turatie Speed rot / min rev / min	Presiune aspiratie Suction Pressure bar	Lichid lucru Working Fluid	Temperatura Working temperature °C	Vascozitate Viscosity la / at 20 °C °E	Masa Weight kg
PM 1-000-20-D(S)-2800	15 - 50	20	2800	- 0,1 + 0,5	motorina diesel oil STAS 240 - 80	- 25 ... + 50	1,17 2	27
PM 1-000-20-D(S)-2500	15 - 45	20	2500					
PM 1-000-7-D(S)-1750	5 - 35	7	1750					
PM 2-000-20-D(S)-2800	50 - 110	20	2800					29
PM 2-000-20-D(S)-2500	45 - 100	20	2500					
PM 2-000-7-D(S)-1750	35 - 75	7	1750					
PM 3-000-20-D(S)-2800	110 - 200	20	2800					31
PM 3-000-20-D(S)-2500	100 - 170	20	2500					
PM 3-000-7-D(S)-1750	75 - 115	7	1750					



HESPER

Str. Dr. Constantin Istrati, Nr. 1, Sector 4, BUCUREȘTI

